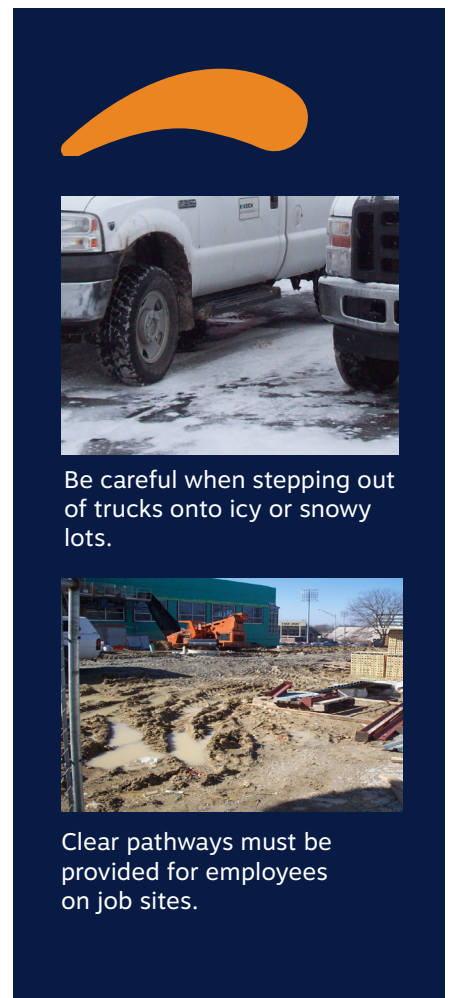


# Slips and Trips: Outside Construction

*Slips, trips and falls are leading causes of workplace injuries, and the most common incidents occur on the same level. On a busy construction site, a slip or trip can lead to a head injury, a fall on a protruding object, or contact with dangerous machinery. Review this information with your employees to reduce the risk of slips and trips on your job site.*

## Tool Box Tips

- Scan the walking and working surface when moving around the job site.
- Pay attention to your walking path.
- Do not text or talk on the phone while walking through a job site. Stand in one place to talk.
- Construction footwear must have aggressive tread. Worn out soles must not be used. Slip-resistant soles are recommended.
- Pick up job site scraps, debris and trash.
- Do not use pallets for walkways.
- Create designated walk paths when snow and ice have accumulated on the job site.
- Do not let employees walk through piles of materials or scrap.
- Improve drainage to prevent puddles and ice.
- Provide good ramps and stairs for employees to access the first level of the building.
- Do not let employees jump onto and off of doorway landings, before foundations or footings are backfilled.
- Keep machine steps clear of mud, ice and snow.



*These advisory materials have been developed from national standards and sources believed to be reliable, however, no guarantee is made as to the sufficiency of the information contained in the material and Missouri Employers Mutual Insurance Company assumes no liability for its use. Advice about specific situations should be obtained from a safety professional.*